

SWEETWATER SECTION THREE

(A PORTION OF BOCA CHASE, RIVIERA P.U.D.)
 A REPLAT OF TRACTS 27 and 28 "FLORIDA FRUIT LANDS COMPANY'S
 SUBDIVISION NO. 2" OF SECTION 1, TOWNSHIP 47 SOUTH, RANGE 41 EAST
 (P.B. 1 Pg.102) AND A PORTION OF THE N.E. 1/4 OF SECTION 2,
 TOWNSHIP 47 SOUTH, RANGE 41 EAST, PALM BEACH COUNTY, FLORIDA

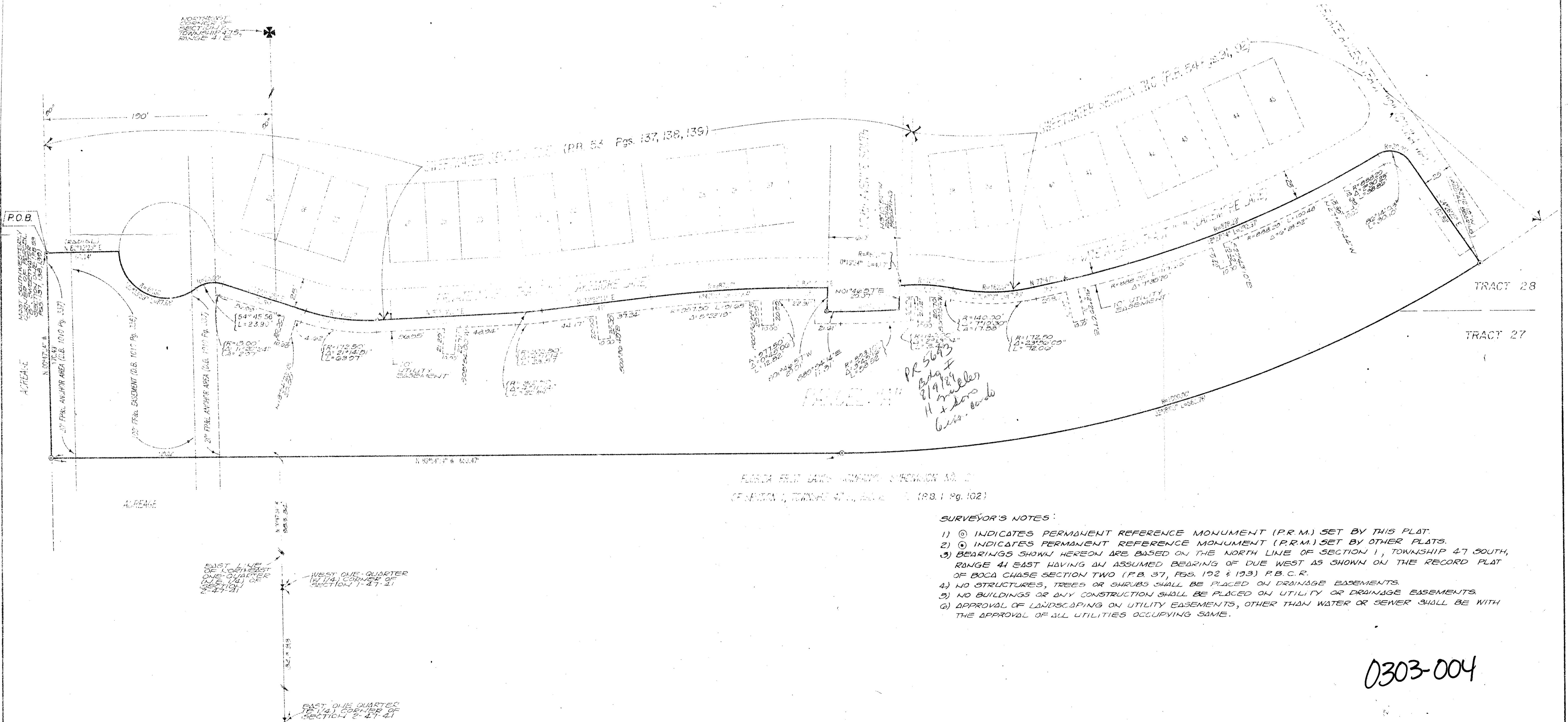
182/47/41

SUBDIVISION	56	113
BOOK	56	113
FLOOR		
QUAD	6	MAP # 100A
SE		33434
PUD NAME	Boca Chase	3

113

SHEET 2 OF 2 SHEETS

1-B
2-A-1
GRAPHIC SCALE 1"=40'



FLORIDA FRUIT LANDS COMPANY'S SUBDIVISION NO. 2
 OF SECTION 1, TOWNSHIP 47 SOUTH, RANGE 41 EAST (P.B. 1 Pg. 102)

- SURVEYOR'S NOTES:**
- 1) (X) INDICATES PERMANENT REFERENCE MONUMENT (P.R.M.) SET BY THIS PLAT.
 - 2) (O) INDICATES PERMANENT REFERENCE MONUMENT (P.R.M.) SET BY OTHER PLATS.
 - 3) BEARINGS SHOWN HEREON ARE BASED ON THE NORTH LINE OF SECTION 1, TOWNSHIP 47 SOUTH, RANGE 41 EAST HAVING AN ASSUMED BEARING OF DUE WEST AS SHOWN ON THE RECORD PLAT OF BOCA CHASE SECTION TWO (P.B. 37, PGS. 192 & 193) P.B.C.R.
 - 4) NO STRUCTURES, TREES OR SHRUBS SHALL BE PLACED ON DRAINAGE EASEMENTS.
 - 5) NO BUILDINGS OR ANY CONSTRUCTION SHALL BE PLACED ON UTILITY OR DRAINAGE EASEMENTS.
 - 6) APPROVAL OF LANDSCAPING ON UTILITY EASEMENTS, OTHER THAN WATER OR SEWER SHALL BE WITH THE APPROVAL OF ALL UTILITIES OCCUPYING SAME.

0303-004

SWEETWATER SECTION THREE 56/113